



INSTALLATION GUIDE FOR THE RK-01 Road King Classic Saddlebag Locks

Thank you for purchasing the INERTIA wrx RK-01 security system for the Road King Classic, semirigid leather covered saddlebags. The following instructions will take you step by step through the installation process. Care should be taken to protect the bag at all times during the installation. A blanket or other soft surface should be used to prevent marring or scratching the leather. Take your time and follow the instructions to the letter.

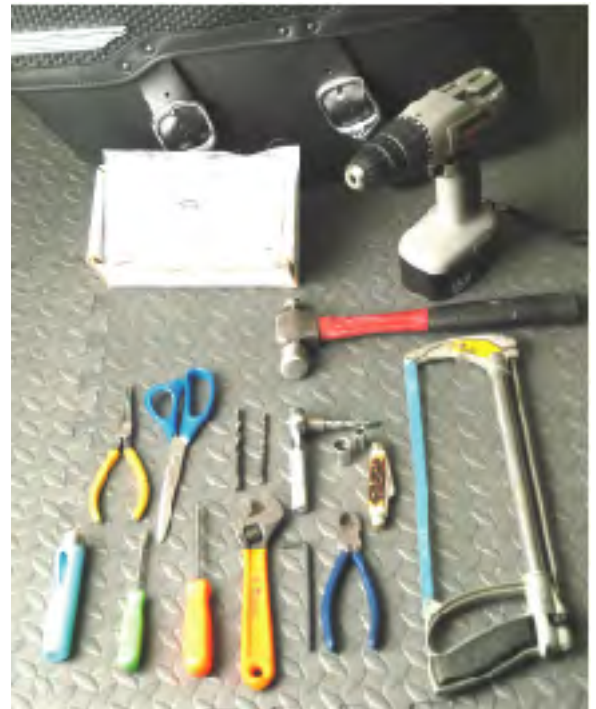
The installation process is shown in numbered steps for three separate subassemblies for each bag, one left and one right. There is a You can install the subassemblies in any order. When installing any subassembly, follow the instructions for that assemble, step-by-step until complete. If you wish to do one side at a time, save the unused parts for the opposite side bag.

PREPARATION

Get the tools you will need to remove old hardware, prepare the bag and install the new lock.

Recommended tools are:

- Cordless drill
- Hammer
- Needle nose pliers
- Scissors
- Drill bits: 3/16" and 5/16"
- 1/4" drive ratchet, short extension, 3/8" and 7/16" sockets
- Pocket knife
- 3/4" hole punch
- #2 Phillips screwdriver
- flat blade screwdriver
- Adjustable wrench
- 3/16" Allen wrench
- Diagonal cutting pliers
- Hacksaw w/ metal cutting blade.



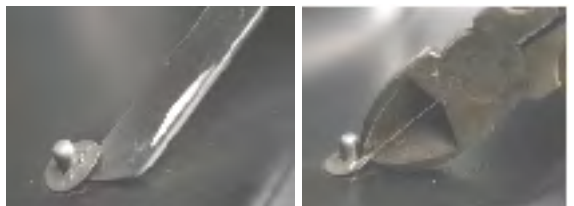
Inspect the contents of the box to make sure that you have all of the necessary subassemblies.

You should have the following:

- Right and Left side, striker plate/bolt assembly
- Right side backing plate
- Left side backing plate
- Right side lock and latch assembly
- Left side lock and latch assembly
- Right and Left side, rail clamp assembly



Pry the keepers up from the emblem stud enough to get diagonal cutting pliers across the surface. Twist the keeper until it breaks off. Repeat for opposite stud. Remove emblem



© Road King is a registered trademark of Harley-Davidson
© 2005 INERTIA wrx, INC, All Rights Reserved



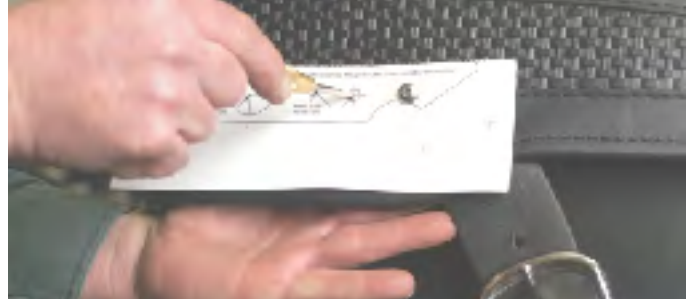
1. Cut off the back stud (at the pointed end of the emblem) with a hacksaw. Hacksaw must have a fine tooth metal cutting blade. Allow blade to slide along the flat edges of the emblem as shown.



2. Thread the front stud with the tap provided. OIL THE STUD FIRST. Thread the stud square, using a socket or wrench. Make no more than a half turn at one time, always backing up one-half turn each time.



3. Place washer (J) over emblem stud and insert threaded stud through the hole in the backing plate (L). Place cloverleaf spring (K) over the stud and onto the backing plate with the dome facing up. Place flat washer (J) and nylon cap nut (I) on the stud and tighten until a smooth open/close rotation is achieved. See illustration at right. Emblem should snap in place and not rattle*.



4. Pin template on the bag with #10 screws (T) provided. Make two 5/16" holes where shown. Make one 3/4" hole where shown with a punch, hole saw or drill bit. If drilling the 3/4" hole always cut the leather off first using a sharp knife. Punches, either knock-out type or gasket type do the best job without removing the leather layer.



5. Install the lock (M) through the backing plate and bag. Install guard plate (N) as shown. Orient key slots as shown



6. Place internal tooth washer (H) over lock and install large lock nut (G). Install stop cam (F) as shown at right.

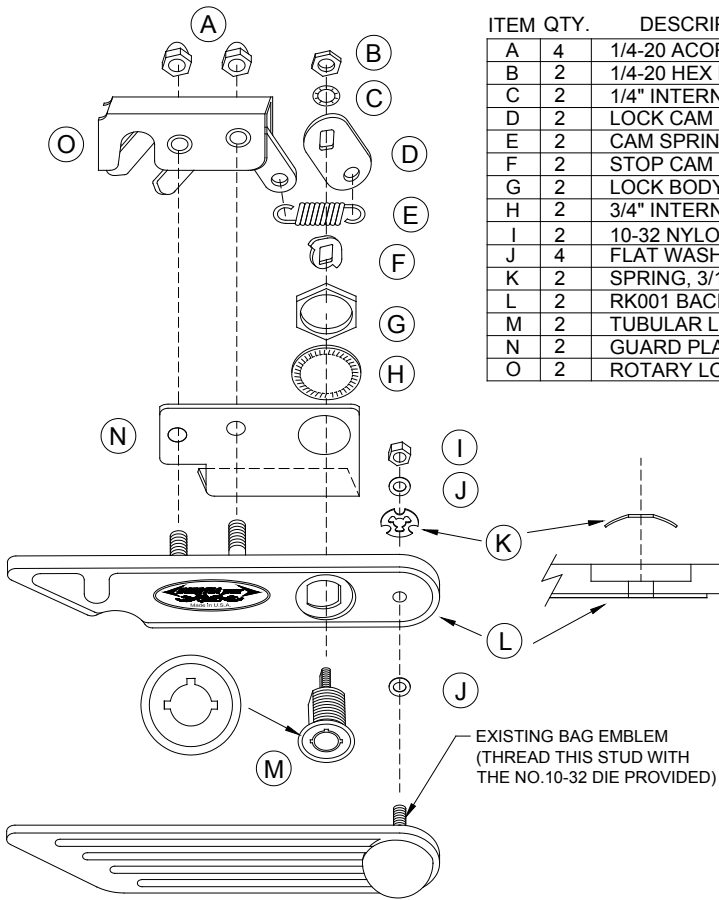


7. Hook the spring (E) to connect the latch and the lock cam (D) as shown. Place the stainless steel rotary latch (O) over the backing plate studs with the stamped printing facing toward you.



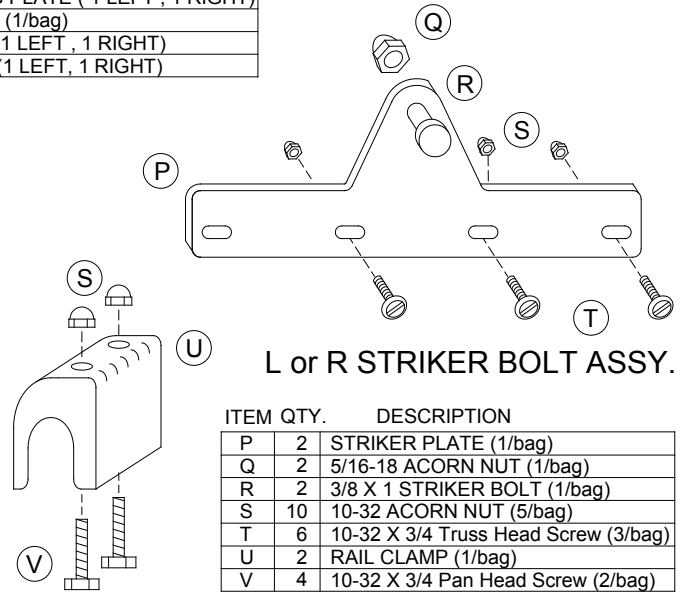
8. Tighten the latch in place with the chrome acorn nuts (A) provided. Attach lock cam with internal tooth washer (C) and nut (B). Refer to exploded view for clarification.

* Emblems may be distorted by the original installation. It may be necessary to straighten the emblem. If so, protect the emblem with a soft material and clamp it in a vise well away from the threaded stud area. In small steps, gently bend the emblem to conform evenly with the backing plate.



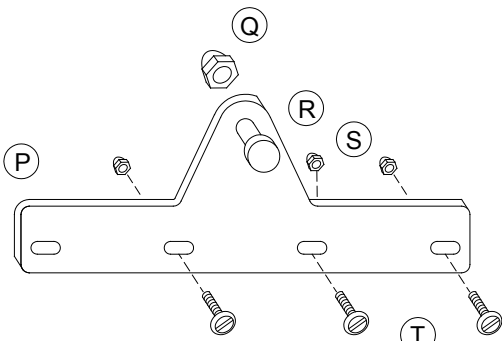
RIGHT SIDE LOCK ASSEMBLY

ITEM QTY.	DESCRIPTION
A 4	1/4-20 ACORN NUT (2/bag)
B 2	1/4-20 HEX NUT (1/side)
C 2	1/4" INTERNAL TOOTH WASHER (1/bag)
D 2	LOCK CAM (1/bag)
E 2	CAM SPRING (1/bag)
F 2	STOP CAM (1/bag)
G 2	LOCK BODY NUT (1/bag)
H 2	3/4" INTERNAL TOOTH WASHER (1/bag)
I 2	10-32 NYLOCK NUT (1/bag)
J 4	FLAT WASHER NO. 10 (2/bag)
K 2	SPRING, 3/16" CLOVER DISH (1/bag)
L 2	RK001 BACKING PLATE (1 LEFT , 1 RIGHT)
M 2	TUBULAR LOCK (1/bag)
N 2	GUARD PLATE (1 LEFT , 1 RIGHT)
O 2	ROTARY LOCK (1 LEFT, 1 RIGHT)

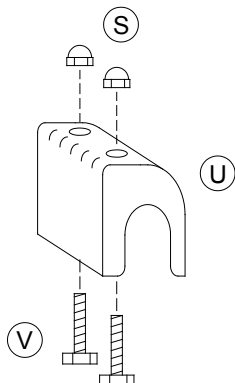


L & R RAIL CLAMP ASSEMBLY

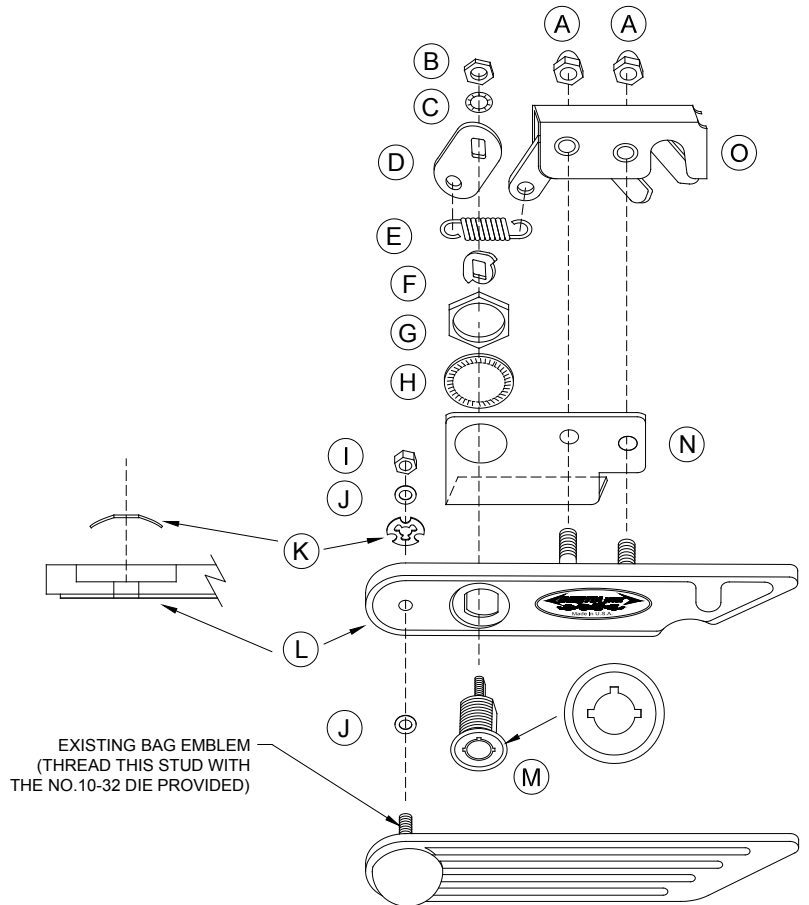
ITEM QTY.	DESCRIPTION
P 2	STRIKER PLATE (1/bag)
Q 2	5/16-18 ACORN NUT (1/bag)
R 2	3/8 X 1 STRIKER BOLT (1/bag)
S 10	10-32 ACORN NUT (5/bag)
T 6	10-32 X 3/4 Truss Head Screw (3/bag)
U 2	RAIL CLAMP (1/bag)
V 4	10-32 X 3/4 Pan Head Screw (2/bag)



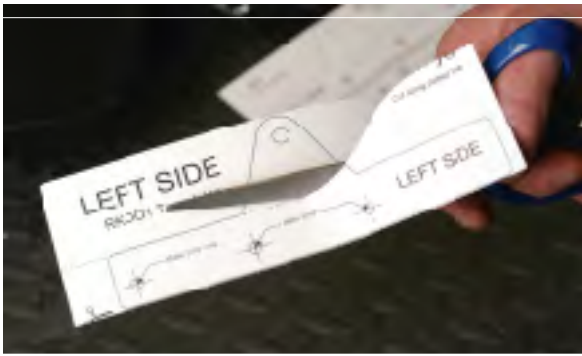
STRIKER BOLT ASSEMBLY



L & R RAIL CLAMP ASSEMBLY



LEFT SIDE LOCK ASSEMBLY



9. Using scissors, cut out the left side template for the striker plate.



10. Affix the template to match the contour of the bag. Drill the holes as shown on the template.



11. With the hardware provided, install three truss head screws (T) through the bag . Place the striker plate over the screws on the inside of the bag and tighten with the acorn nuts (S) provided.



12. Install the striker bolt (R) in the plate with the shoulder bolt head facing out. Tighten in place using the acorn nut (Q) provided.



13. Open the bag. Drill out and remove the rivets holding the FRONT rail clamp ONLY. The replacement of this clamp greatly reduces the ability to distort the bag when locked.



14. Using the hardware provided, bolt the rigid rail clamp (U) in place with the bolt heads (V) inserted through the clamp and the bag. Secure with the acorn nuts (S) provided.



15. Left side bag is now complete.



16. Repeat all steps for the right side bag.